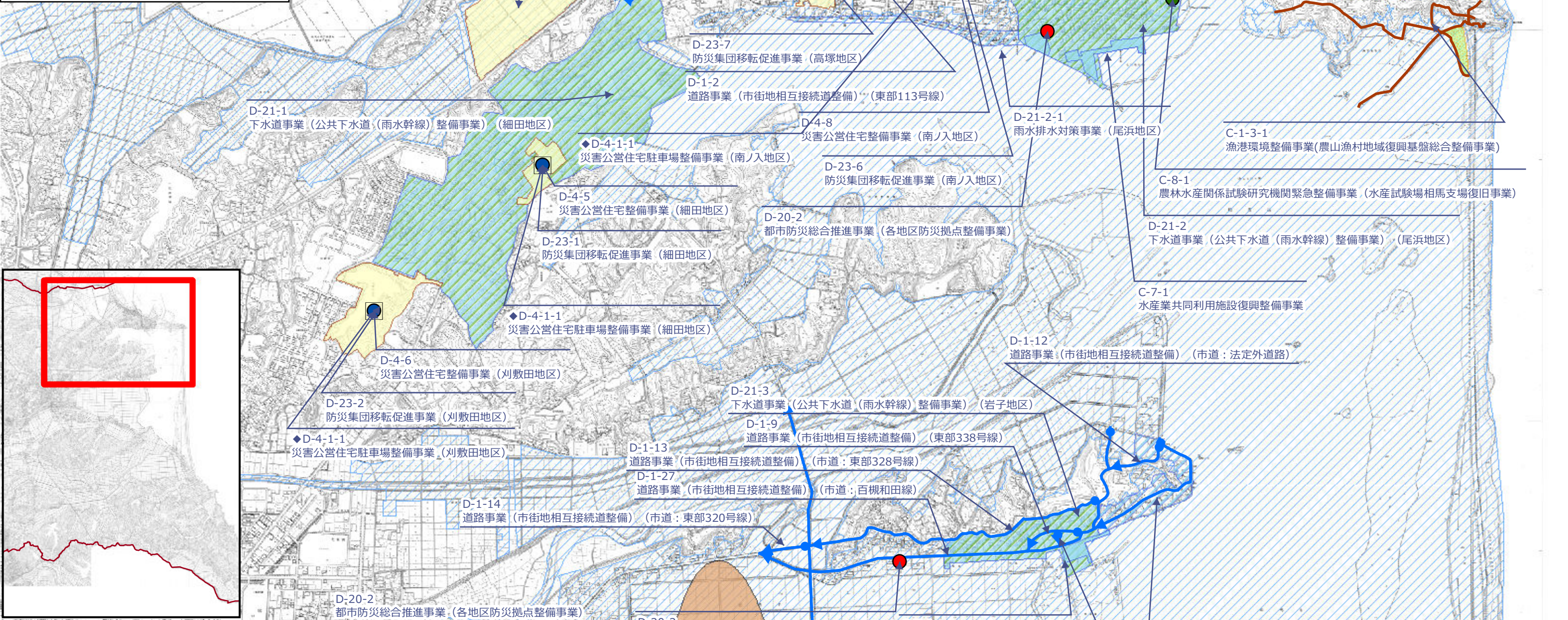


# 相馬市復興交付金事業計画 位置図

- 凡 例
- A-1. 学校施設整備事業費国庫負担事業
  - A-2. 学校施設環境改善事業
  - A-4. 埋蔵文化財発掘調査事業
  - C-1. 農山漁村地域復興基盤総合整備事業
  - ◆D-4. 災害公営住宅駐車場整備事業
  - ◆C-1. 漁港環境整備事業(効果促進)
  - C-8. 水産種苗研究・生産施設普及事業
  - C-4. 被災地域農業復興総合支援事業
  - C-7. 水産業共同利用施設復興整備事業
  - C-8. 農林水産関係試験研究機関緊急整備事業
  - C-8. 水産種苗研究・生産施設普及事業
  - D-20. 都市防災総合推進事業(各地区防災拠点整備事業)
  - D-1. 道路事業(市街地相互接続道整備)市道
  - D-1. 道路事業(市街地相互接続道整備)県道
  - ◆D-1. 震災後における代替輸送確保支援モデル事業
  - D-4. 災害公営住宅整備事業
  - D-20. 都市防災総合推進事業(防災備蓄拠点整備事業)
  - D-21. 下水道事業(公共下水道(雨水幹線)整備事業)
  - ◆D-21. 雨水排水対策事業
  - D-22. 都市公園事業
  - D-23. 防災集団移転促進事業
  - 災害危険区域
  - 津波浸水区域
  - 市町村界





凡 例

A-1.学校施設整備事業費国庫負担事業

A-2.学校施設環境改善事業

A-4.埋蔵文化財発掘調査事業

C-1.農山漁村地域復興整備基盤総合整備事業

D-4.災害公営住宅駐車場整備事業

C-1.漁港環境整備事業(効果促進)

C-8.水産種苗研究・生産施設普及事業

C-4.被災地域農業復興総合支援事業

C-7.水産業共同利用施設復興整備事業

C-8.農林水産関係試験研究機関緊急整備事業

C-8.水産種苗研究・生産施設普及事業

D-20.都市防災総合推進事業(各地区防災拠点整備事業)

D-1.道路事業(市街地相互接続道整備)市道

D-1.道路事業(市街地相互接続道整備)県道

D-1.震災後における代替輸送確保支援モデル事業

D-4.災害公営住宅整備事業

D-20.都市防災総合推進事業(防災備蓄拠点整備事業)

D-21.下水道事業(公共下水道(雨水幹線)整備事業)

D-21.雨水排水対策事業

D-22.都市公園事業

D-23.防災集団移転促進事業

災害危険区域

津波浸水区域

市町村界

相馬市復興交付金事業計画 位置図

The map displays various disaster recovery projects in Aomori City, overlaid on a grayscale aerial photograph. The projects are categorized by color and shape, corresponding to the legend:

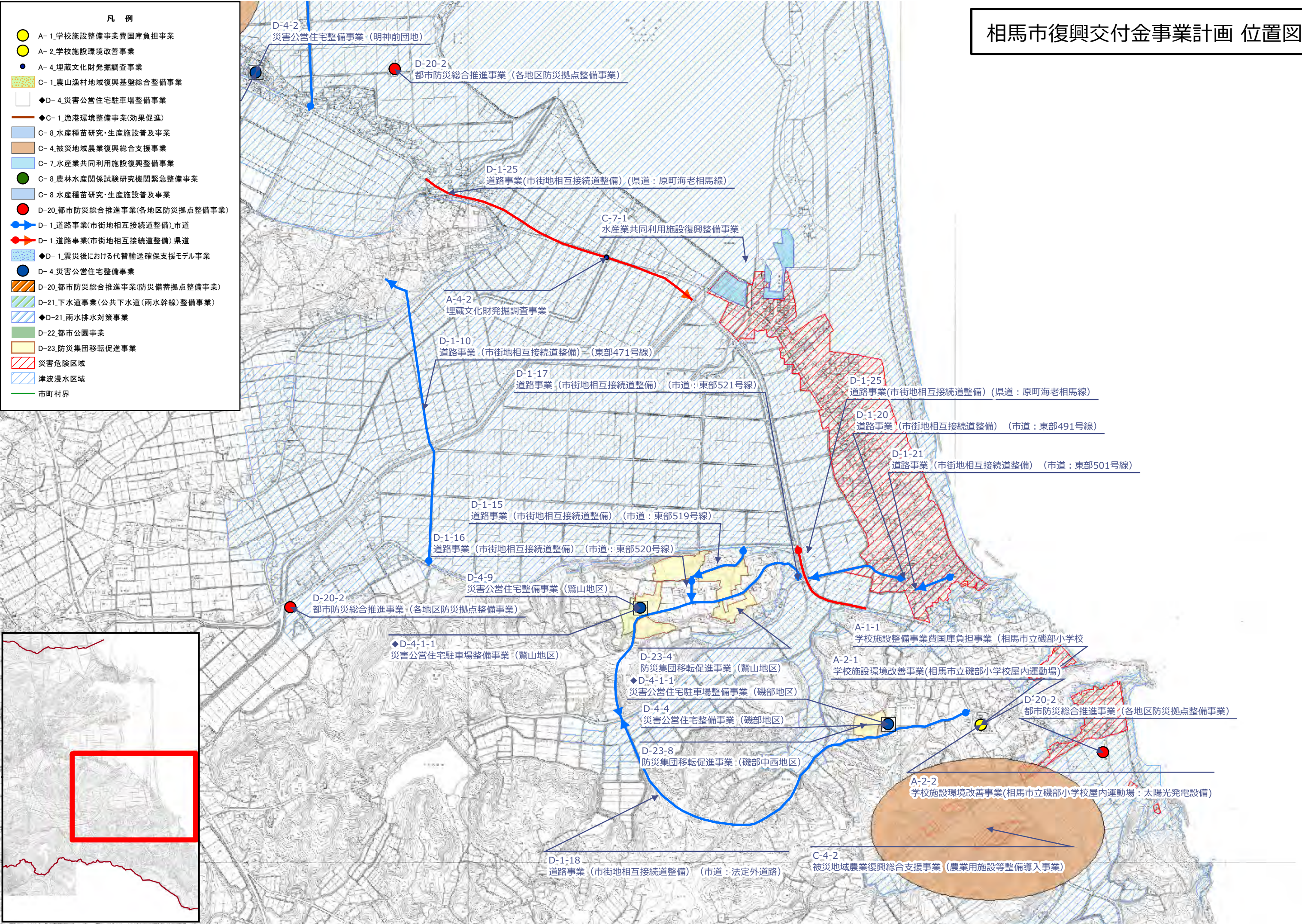
- Red circles:** D-20. Urban disaster prevention comprehensive promotion project (disaster preparedness base improvement project).
- Blue circles:** D-4. Disaster public housing improvement project.
- Blue diamonds:** D-4-1-1. Disaster public housing parking lot improvement project (Aomori City).
- Orange oval:** C-4-1. Disaster-stricken area agriculture recovery comprehensive support project (agriculture facility improvement introduction project).
- Green areas:** C-1. Mountain fishing village area recovery and basic infrastructure comprehensive improvement project (recovery improvement implementation).
- Blue hatched areas:** D-21. Sewerage project (public sewerage (rainwater main line) improvement project).
- Blue diagonal lines:** D-21. Rainwater drainage countermeasure project.
- Blue solid lines:** D-1. Road project (urban mutual connection road improvement).
- Red solid lines:** D-1. Road project (urban mutual connection road improvement) (Prefectural Road: Aomori Prefectural Road).
- Blue dashed lines:** D-1. Road project (urban mutual connection road improvement) (Municipal Road: Aomori Prefectural Road).
- Blue dotted lines:** D-1. Road project (urban mutual connection road improvement) (Municipal Road: Aomori Prefectural Road).
- Blue solid lines with arrows:** D-1. Road project (urban mutual connection road improvement) (Municipal Road: Aomori Prefectural Road).
- Blue solid lines with dots:** D-1. Road project (urban mutual connection road improvement) (Municipal Road: Aomori Prefectural Road).
- Blue solid lines with circles:** D-1. Road project (urban mutual connection road improvement) (Municipal Road: Aomori Prefectural Road).
- Blue solid lines with squares:** D-1. Road project (urban mutual connection road improvement) (Municipal Road: Aomori Prefectural Road).
- Blue solid lines with triangles:** D-1. Road project (urban mutual connection road improvement) (Municipal Road: Aomori Prefectural Road).
- Blue solid lines with diamonds:** D-1. Road project (urban mutual connection road improvement) (Municipal Road: Aomori Prefectural Road).
- Blue solid lines with crosses:** D-1. Road project (urban mutual connection road improvement) (Municipal Road: Aomori Prefectural Road).
- Blue solid lines with pluses:** D-1. Road project (urban mutual connection road improvement) (Municipal Road: Aomori Prefectural Road).
- Blue solid lines with asterisks:** D-1. Road project (urban mutual connection road improvement) (Municipal Road: Aomori Prefectural Road).
- Blue solid lines with hash marks:** D-1. Road project (urban mutual connection road improvement) (Municipal Road: Aomori Prefectural Road).
- Blue solid lines with percent signs:** D-1. Road project (urban mutual connection road improvement) (Municipal Road: Aomori Prefectural Road).
- Blue solid lines with dollar signs:** D-1. Road project (urban mutual connection road improvement) (Municipal Road: Aomori Prefectural Road).
- Blue solid lines with ampersands:** D-1. Road project (urban mutual connection road improvement) (Municipal Road: Aomori Prefectural Road).
- Blue solid lines with at signs:** D-1. Road project (urban mutual connection road improvement) (Municipal Road: Aomori Prefectural Road).
- Blue solid lines with underscore:** D-1. Road project (urban mutual connection road improvement) (Municipal Road: Aomori Prefectural Road).
- Blue solid lines with tilde:** D-1. Road project (urban mutual connection road improvement) (Municipal Road: Aomori Prefectural Road).
- Blue solid lines with colon:** D-1. Road project (urban mutual connection road improvement) (Municipal Road: Aomori Prefectural Road).
- Blue solid lines with semicolon:** D-1. Road project (urban mutual connection road improvement) (Municipal Road: Aomori Prefectural Road).
- Blue solid lines with comma:** D-1. Road project (urban mutual connection road improvement) (Municipal Road: Aomori Prefectural Road).
- Blue solid lines with period:** D-1. Road project (urban mutual connection road improvement) (Municipal Road: Aomori Prefectural Road).
- Blue solid lines with exclamation mark:** D-1. Road project (urban mutual connection road improvement) (Municipal Road: Aomori Prefectural Road).
- Blue solid lines with question mark:** D-1. Road project (urban mutual connection road improvement) (Municipal Road: Aomori Prefectural Road).
- Blue solid lines with plus:** D-1. Road project (urban mutual connection road improvement) (Municipal Road: Aomori Prefectural Road).
- Blue solid lines with minus:** D-1. Road project (urban mutual connection road improvement) (Municipal Road: Aomori Prefectural Road).
- Blue solid lines with multiply:** D-1. Road project (urban mutual connection road improvement) (Municipal Road: Aomori Prefectural Road).
- Blue solid lines with divide:** D-1. Road project (urban mutual connection road improvement) (Municipal Road: Aomori Prefectural Road).
- Blue solid lines with modulo:** D-1. Road project (urban mutual connection road improvement) (Municipal Road: Aomori Prefectural Road).
- Blue solid lines with power:** D-1. Road project (urban mutual connection road improvement) (Municipal Road: Aomori Prefectural Road).
- Blue solid lines with square root:** D-1. Road project (urban mutual connection road improvement) (Municipal Road: Aomori Prefectural Road).
- Blue solid lines with cube root:** D-1. Road project (urban mutual connection road improvement) (Municipal Road: Aomori Prefectural Road).
- Blue solid lines with fourth root:** D-1. Road project (urban mutual connection road improvement) (Municipal Road: Aomori Prefectural Road).
- Blue solid lines with fifth root:** D-1. Road project (urban mutual connection road improvement) (Municipal Road: Aomori Prefectural Road).
- Blue solid lines with sixth root:** D-1. Road project (urban mutual connection road improvement) (Municipal Road: Aomori Prefectural Road).
- Blue solid lines with seventh root:** D-1. Road project (urban mutual connection road improvement) (Municipal Road: Aomori Prefectural Road).
- Blue solid lines with eighth root:** D-1. Road project (urban mutual connection road improvement) (Municipal Road: Aomori Prefectural Road).
- Blue solid lines with ninth root:** D-1. Road project (urban mutual connection road improvement) (Municipal Road: Aomori Prefectural Road).
- Blue solid lines with tenth root:** D-1. Road project (urban mutual connection road improvement) (Municipal Road: Aomori Prefectural Road).
- Blue solid lines with eleventh root:** D-1. Road project (urban mutual connection road improvement) (Municipal Road: Aomori Prefectural Road).
- Blue solid lines with twelfth root:** D-1. Road project (urban mutual connection road improvement) (Municipal Road: Aomori Prefectural Road).
- Blue solid lines with thirteenth root:** D-1. Road project (urban mutual connection road improvement) (Municipal Road: Aomori Prefectural Road).
- Blue solid lines with fourteenth root:** D-1. Road project (urban mutual connection road improvement) (Municipal Road: Aomori Prefectural Road).
- Blue solid lines with fifteenth root:** D-1. Road project (urban mutual connection road improvement) (Municipal Road: Aomori Prefectural Road).
- Blue solid lines with sixteenth root:** D-1. Road project (urban mutual connection road improvement) (Municipal Road: Aomori Prefectural Road).
- Blue solid lines with seventeenth root:** D-1. Road project (urban mutual connection road improvement) (Municipal Road: Aomori Prefectural Road).
- Blue solid lines with eighteenth root:** D-1. Road project (urban mutual connection road improvement) (Municipal Road: Aomori Prefectural Road).
- Blue solid lines with nineteenth root:** D-1. Road project (urban mutual connection road improvement) (Municipal Road: Aomori Prefectural Road).
- Blue solid lines with twentieth root:** D-1. Road project (urban mutual connection road improvement) (Municipal Road: Aomori Prefectural Road).

Inset map in the bottom left corner shows the location of Aomori City within the Tohoku region of Japan, highlighted by a red rectangle.



# 相馬市復興交付金事業計画 位置図

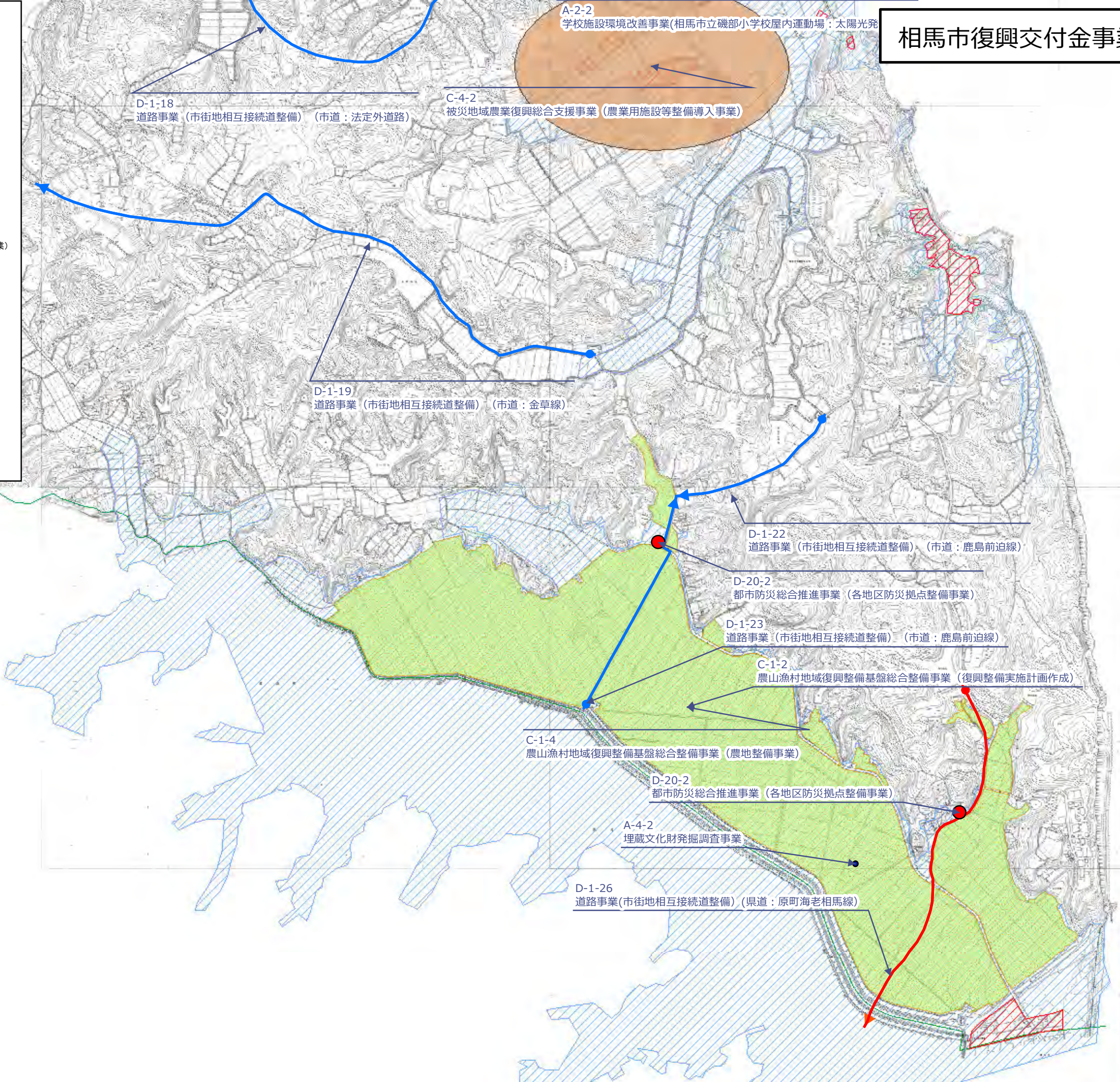
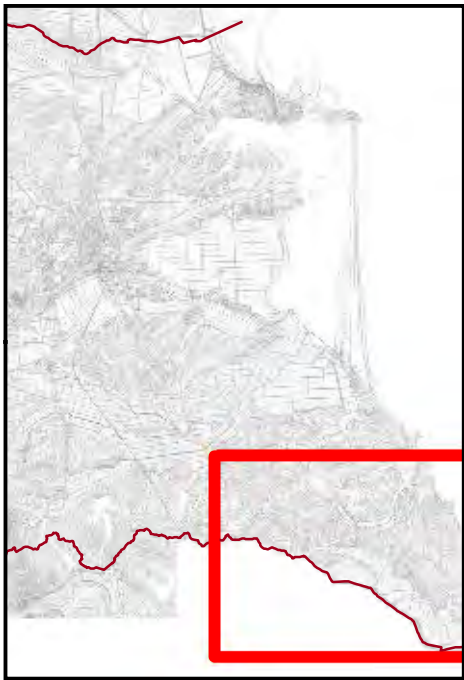
- 凡 例
- A-1. 学校施設整備事業費国庫負担事業
  - A-2. 学校施設環境改善事業
  - A-4. 埋蔵文化財発掘調査事業
  - C-1. 農山漁村地域復興基盤総合整備事業
  - ◆D-4. 災害公営住宅駐車場整備事業
  - ◆C-1. 漁港環境整備事業(効果促進)
  - C-8. 水産種苗研究・生産施設普及事業
  - C-4. 被災地域農業復興総合支援事業
  - C-7. 水産業共同利用施設復興整備事業
  - C-8. 農林水産関係試験研究機関緊急整備事業
  - C-8. 水産種苗研究・生産施設普及事業
  - D-20. 都市防災総合推進事業(各地区防災拠点整備事業)
  - D-1. 道路事業(市街地相互接続道整備)市道
  - D-1. 道路事業(市街地相互接続道整備)県道
  - ◆D-1. 震災後における代替輸送確保支援モデル事業
  - D-4. 災害公営住宅整備事業
  - D-20. 都市防災総合推進事業(防災備蓄拠点整備事業)
  - D-21. 下水道事業(公共下水道(雨水幹線)整備事業)
  - ◆D-21. 雨水排水対策事業
  - D-22. 都市公園事業
  - D-23. 防災集団移転促進事業
  - 災害危険区域
  - 津波浸水区域
  - 市町村界





相馬市復興交付金事業計画 位置図

- 凡 例
- A-1. 学校施設整備事業費国庫負担事業
  - A-2. 学校施設環境改善事業
  - A-4. 埋蔵文化財発掘調査事業
  - C-1. 農山漁村地域復興基盤総合整備事業
  - ◆D-4. 災害公営住宅駐車場整備事業
  - ◆C-1. 漁港環境整備事業(効果促進)
  - C-8. 水産種苗研究・生産施設普及事業
  - C-4. 被災地域農業復興総合支援事業
  - C-7. 水産業共同利用施設復興整備事業
  - C-8. 農林水産関係試験研究機関緊急整備事業
  - C-8. 水産種苗研究・生産施設普及事業
  - D-20. 都市防災総合推進事業(各地区防災拠点整備事業)
  - D-1. 道路事業(市街地相互接続道整備)市道
  - D-1. 道路事業(市街地相互接続道整備)県道
  - ◆D-1. 震災後における代替輸送確保支援モデル事業
  - D-4. 災害公営住宅整備事業
  - D-20. 都市防災総合推進事業(防災備蓄拠点整備事業)
  - D-21. 下水道事業(公共下水道(雨水幹線)整備事業)
  - ◆D-21. 雨水排水対策事業
  - D-22. 都市公園事業
  - D-23. 防災集団移転促進事業
  - 災害危険区域
  - 津波浸水区域
  - 市町村界





凡 例

A-1.学校施設整備事業費国庫負担事業

A-2.学校施設環境改善事業

A-4.埋蔵文化財発掘調査事業

C-1.農山漁村地域復興基盤総合整備事業

◆D-4.災害公営住宅駐車場整備事業

◆C-1.漁港環境整備事業(効果促進)

C-8.水産種苗研究・生産施設普及事業

C-4.被災地域農業復興総合支援事業

C-7.水産業共同利用施設復興整備事業

C-8.農林水産関係試験研究機関緊急整備事業

C-8.水産種苗研究・生産施設普及事業

D-20.都市防災総合推進事業(各地区防災拠点整備事業)

D-1.道路事業(市街地相互接続道整備)市道

D-1.道路事業(市街地相互接続道整備)県道

◆D-1.震災後における代替輸送確保支援モデル事業

D-4.災害公営住宅整備事業

D-20.都市防災総合推進事業(防災備蓄拠点整備事業)

D-21.下水道事業(公共下水道(雨水幹線)整備事業)

◆D-21.雨水排水対策事業

D-22.都市公園事業

D-23.防災集団移転促進事業

災害危険区域

津波浸水区域

市町村界

# 相馬市復興交付金事業計画 位置図

The map displays the geographical distribution of disaster recovery projects in Rikuma City. Key features include:

- Project Labels:** Numerous labels point to specific project locations, such as "D-20-2 都市防災総合推進事業 (各地区防災拠点整備事業)" and "D-4-1 災害公営住宅整備事業 (馬場野団地)".
- Color-Coded Areas:** Different colors and patterns represent various project types, including disaster-prone areas (red hatched), tsunami inundation zones (blue hatched), and specific project zones (orange, green, blue).
- Infrastructure:** Roads and other infrastructure are shown in grey, with some roads highlighted in blue or red to indicate specific project areas.
- Inset Map:** A red-bordered inset map in the bottom-left corner shows the location of Rikuma City within a larger regional context.