

>/ >/œ è >& è 1 G% >& 1 B 30 ° 3 v 31 ¥# ~ >' ‹ ° Ø > 8 1 B 23 ° Ø > | 25 ° Ø

[]

367,637	
300,472	81.7%
300,472	100.0%

154,605	51.5%
143,573	47.8%
2,293	0.8%
1	0.0%

[]

2,293	
2,130	92.9%
2,091	98.2%

547

116			
39	77		
17.3±2.7	8-22	14.9± 2.6	6-18
13.9±7.8	5.1- 45.0		

116

23 3 11

[]

>0 • A è >& è 2 G% ¥'& ç ô 3 ° 3 v 31 ¥##' ~>' < ° Ø>8¹ B 26 ° Ø>| 27 ° Ø

□

381,237
 270,552 71.0%
 270,552 100.0%

108,726	40.2%
159,596	59.0%
2,230	0.8%
0	0.0%

□

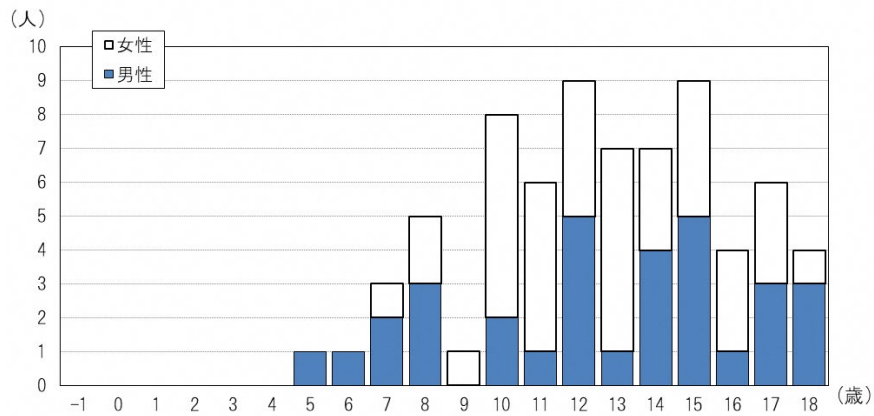
2,230
 1,877 84.2%
 1,834 97.7%

207

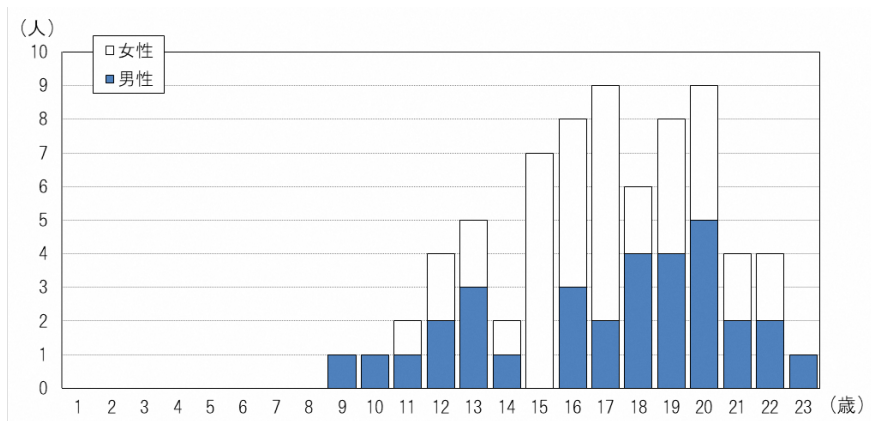
71			
32	39		
16.9±3.2	9-23	12.6± 3.2	5-18
11.1±5.6	5.3- 35.6		

71

23 3 11



[]



>1 • A è >& è 3 G% >'& ç ô 3 ° 3 v 31 ¥##' ~>' < ° Ø>8 1 B 28 ° Ø>| 29 ° Ø

□

336,667
25 4 5
217,922 64.7%
217,922 100.0%

76,431	35.1%
139,989	64.2%
1,502	0.7%
0	0.0%

□

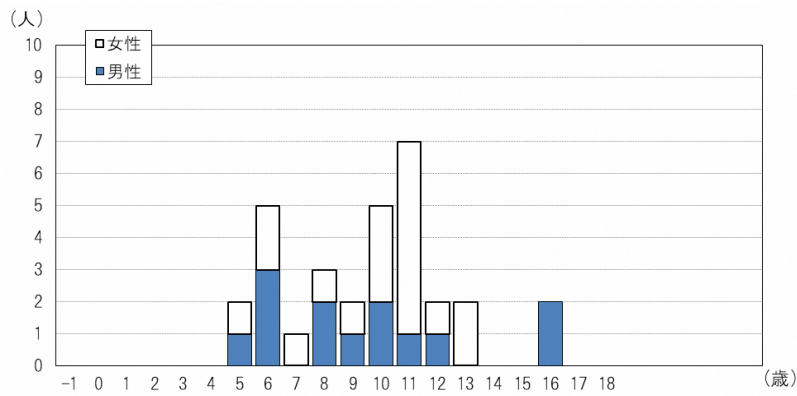
1,502
1,104 73.5%
1,068 96.7%

79

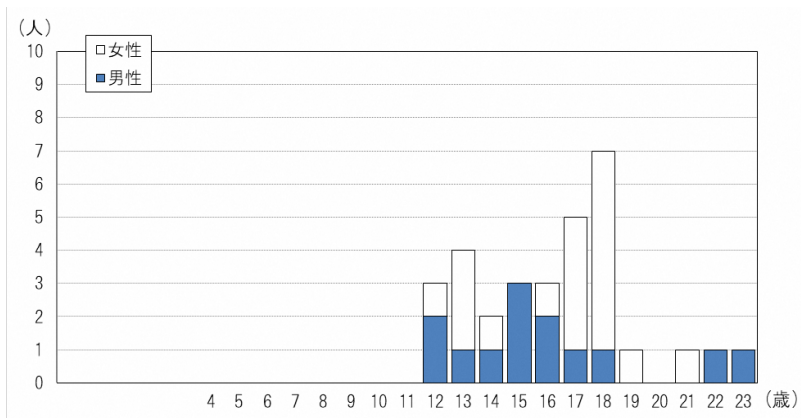
31				
13	18			
16.3±2.9	12-23	9.6±2.9	5-16	
12.9±6.4	5.6-33.0			

31

23 3 11



[]



>2 • A è >& è 4 G% >& ç ô 4 ° 6 v 30 ¥##' ~->' < ° Ø>8¹ B 30 ° Ø>| ç ô - ° Ø

□

294,228

25

4 7

183,410

62.3%

183,410

100.0%

61,712	33.6%
120,304	65.6%
1,394	0.8%
0	0.0%

□

1,394

1,036

74.3%

1,016

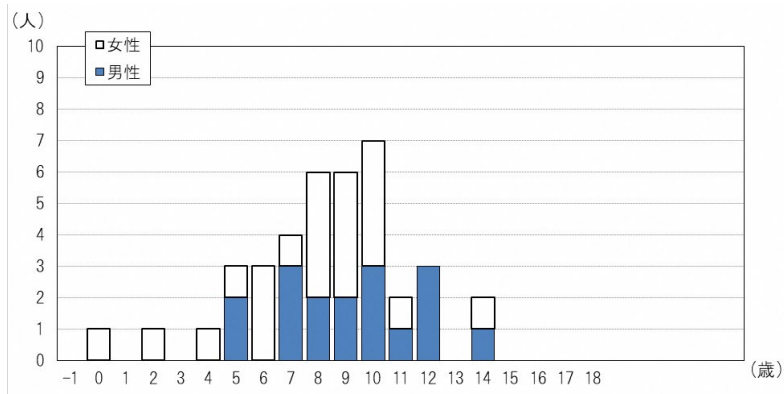
98.1%

91

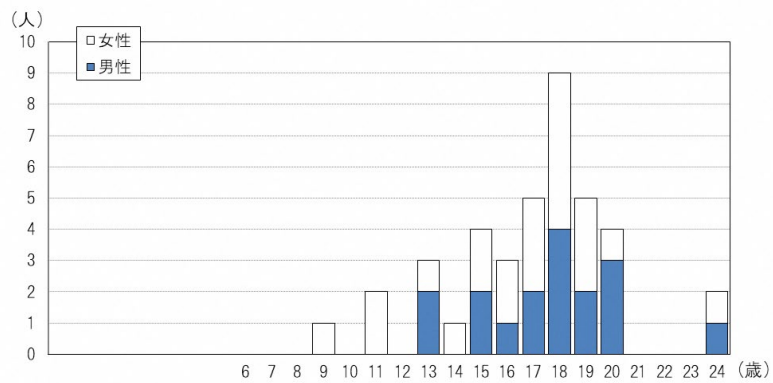
39			
17	22		
17.0±3.1	9-24	8.3±2.9	0-14
13.1±6.3	6.1-29.4		

39

23 3 11



[]



5 • A è >& è 5 G% >& ç ô 5 ° 9 v 30 ¥##' ~>' < ° Ø>8 ç ô 2 ° Ø>| 4 ° Ø

[]

252,938

4 9

113,941 45.0%

113,941 100.0 %

32,840	28.8%
79,755	70.0%
1,346	1.2%
0	0.0%

[]

1,346

1,060 78.8%

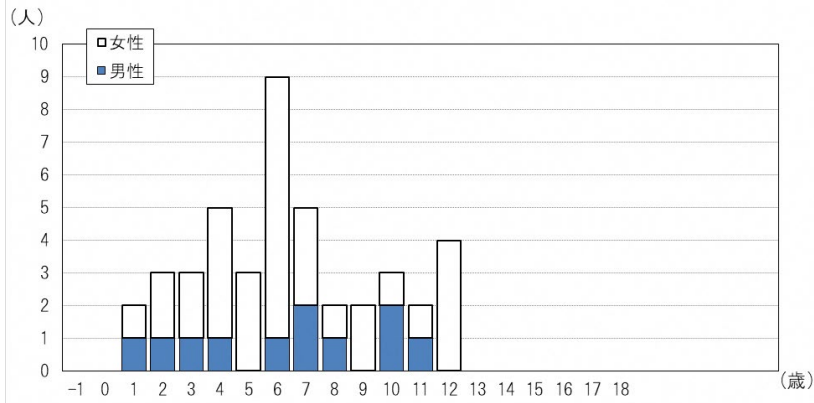
1,007 95.0%

87

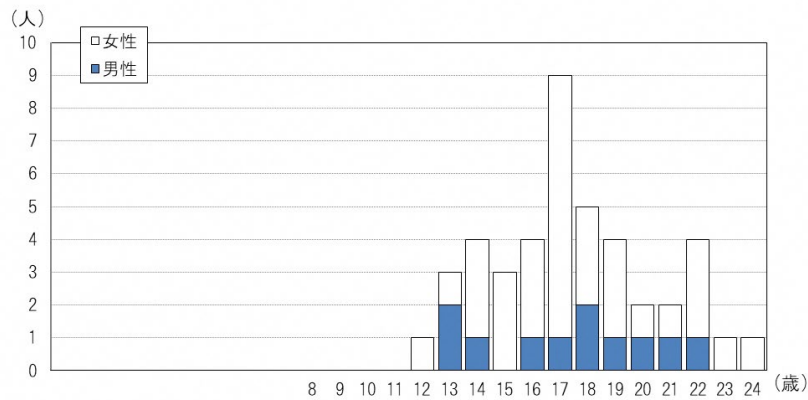
43				
11	32			
17.5± 3.0	12-24	6.4± 3.2	1-12	
13.2± 7.3	5.4-46.7			

43

23 3 11



[]



6 • A è >& è 6 G% >& ç ô 5 ° 9 v 30 ¥##' ~>' < ° Ø>8 ç ô 5 ° Ø>| 6 ° Ø



211,875

4 11

18,304

8.6%

9,978

54 .5%

2,760	27.7%
7,100	71.2%
118	1.2%
0	0.0%

7 25 S`b(% b`è >&ç ô 5 ° 9 v 30 ¥##' ~ >' (° Ø>8' B 29 ° Ø>|

[]

129,006	4 9
11,867	9.2%
11,858	99.9%

5,039	42.5%
6,172	52.0%
6 47	5.5%
0	0.0%

[]

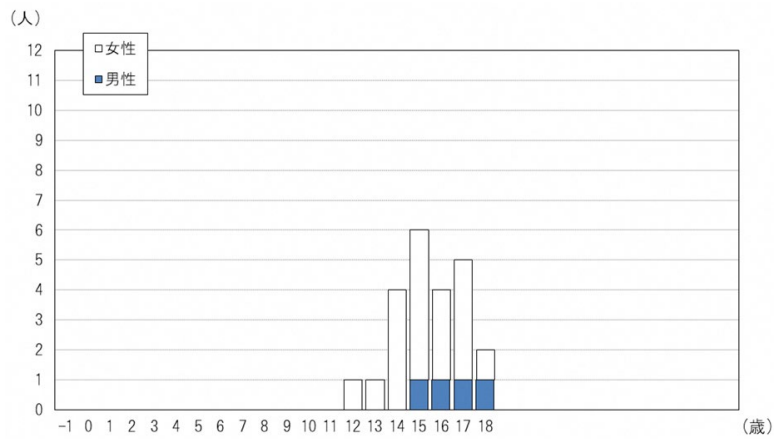
647	
545	84.2%
535	98.2%

49

23				
4	19			
25.3±0.7	24-27	15.5±1.6	12-18	
14.2±1.05	5.3-49.9			

23

23 3 11



[]



8 30 S`b(% b` >&çô 5 ° 9 v 30 ¥#! ~>' (°Ø>8 ç ô 4 °Ø>|

[]

22,625	4
1,571	6.9%
1,562	99.4%

696	44.6%
732	46.9%
134	8.6%
0	0.0%

[]

134	
107	79.9%
96	89.7%

13

5				
0	5			
29.8±0.4	29-30		18.0±0.0	18-18
12.6 ±3.6	9.9-18.6			

(g*f) O ö ^ 8 K O ö \$ 2 8 \ 8 I € S Ç X I g m / i \$ U [' ¼

	5	25	30		
		328			
		275			
	1	271		1	1
					1

H303.31		23	25		
	116	39	77		
		102	1	100	1

2	R4.3.3 1		26	27	
	71	32	39		
	56	55			1

3	R33.3 1		28	29	
	31	13	18		
	29	29			

4	R4.6.30		30		
	39	17	22		
	34	34			

5	R5.9.3 0		2	4	
2	29	6	23		
		25	25		
3	14	5	9		
		9	9		
	43	11	32		
	34	34			

25	R5.9.30		29		
	23	4	19		
		17	16		1

30	R5.9.30		4		
	5	0	5		
		3	3		