

We have compiled visual representations to illustrate the efforts toward the revitalization of Fukushima.

Towards the Realisation of a "New Fukushima"- Tracing the Path of Recovery - (1/2)

★ ... Related to the Fukushima Innovation Coast Framework

25 Mar. 2024

[Living] Realisation of a Local Community where People can Live Safely and Securely

The Great East Japan Earthquake and Disaster Recovery Projects

(As of the end of Feb. 2024)

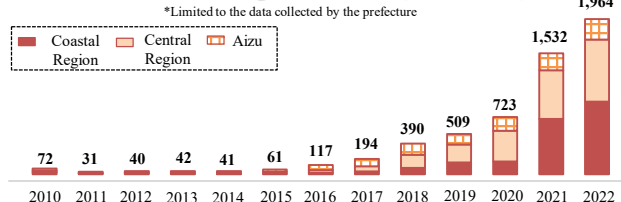


- Projects initiated: 2,158 cases (100%)
Projects completed: 2,153 cases (approximately 99%)
Projects in progress: 5 cases
Projects not initiated: 0 cases

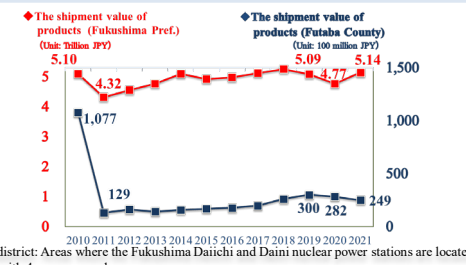
[People] Fostering Human Resources Leading the Future and Building Community Ties



Number of Incoming Relocations (households)



[Employment] Creating Sustainable and Attractive Jobs



Public Infrastructure

Grid of public infrastructure projects including Joban Expressway, Onahama Port, Tadami Line, and Fukushima Reconstruction Roads.

Education and Fostering Human Resources

Grid of educational institutions including Futaba Future School, Odaka Industrial Technology and Commerce High School, and Faculty of Food and Agricultural Sciences.

R&D

Grid of R&D centers including Fukushima Institute for Research, Education and Innovation (F-REI).

Decommissioning

Grid of decommissioning projects including Creative Decommissioning Robot Competition and Naraha Center for Remote Control Technology Development.

Commercial Facilities

Grid of commercial facilities including Shopping Centre "YO-TASHI", Tomioka Town Commercial Complex, and various village centers.

Creation of Relocation, Settlement and Increasing the Number of People Visiting the Prefecture

Grid of projects for relocation and settlement including Katsurao Village Community Revitalization Centre, J-Village, and various support centers.

Robotics, Drones, Aerospace

Grid of robotics and aerospace projects including University of Aizu Revitalization Center and Fukushima Robot Test Field.

Healthcare-related industries

Grid of healthcare-related industry projects including Fukushima Medical Device Development Support Centre and Fukushima Global Medical Science Center.

Healthcare-related Facilities

Grid of healthcare facilities including Futaba Medical Center-affiliated Futaba Revitalization Clinic and Futaba Medical Center-affiliated Hospital.

Educational Facilities

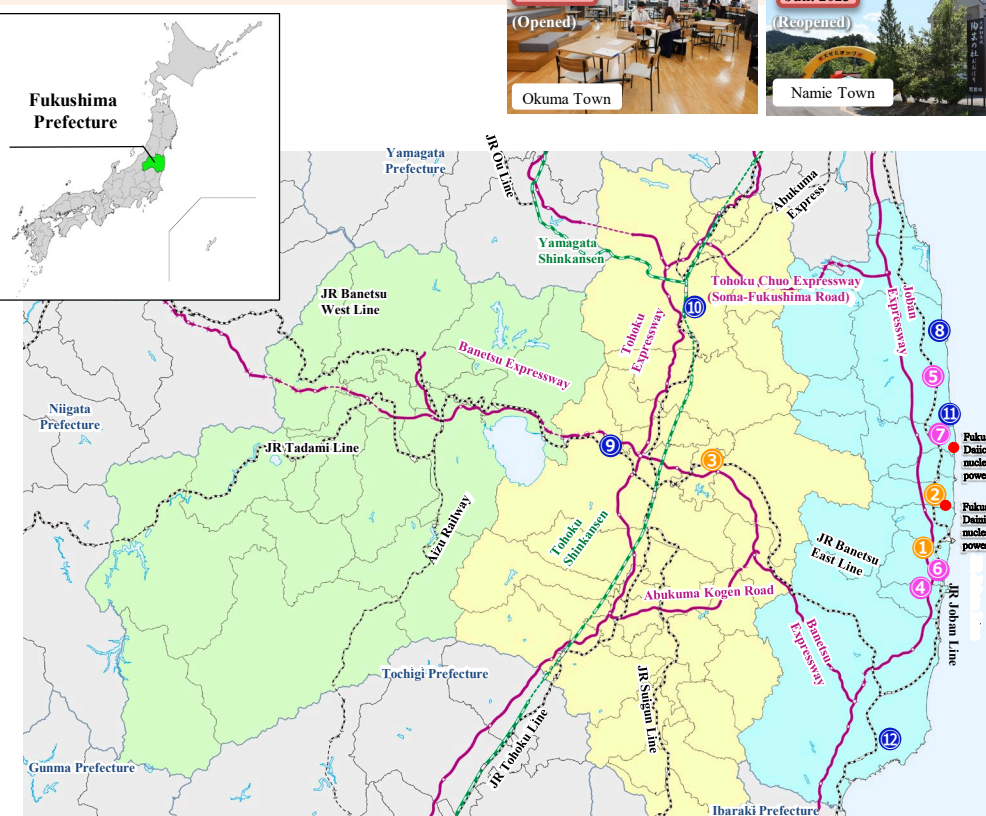
Grid of educational facilities including Resumption of Local Schools.

Residential Facilities

Grid of residential facilities including Constructing Revitalization Public Housing.

Wide Area Bus Services

Grid of wide area bus services including Resumption of Local Schools.



Energy, Environment, Recycling

Grid of energy, environment, and recycling projects including Fukushima Renewable Energy Institute, Soma IHI Green Energy Center, and Fukushima Hydrogen Energy Research Field.

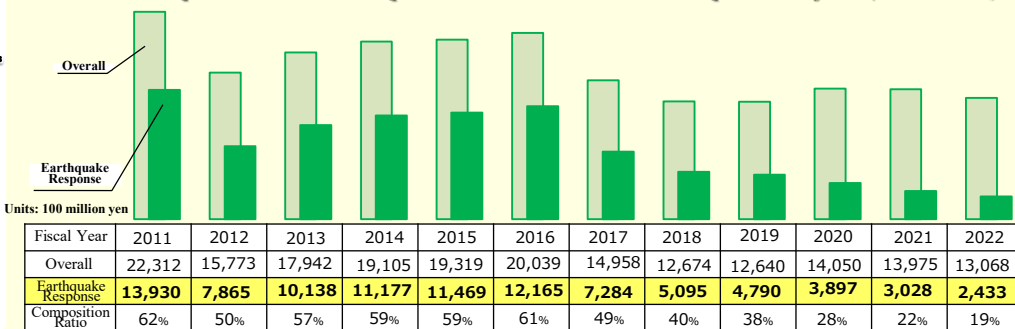
Agricultural, Forestry, and Fisheries Industries

Grid of agricultural, forestry, and fisheries industry projects including Fisheries and Marine Science Research Centre, Sweet Potato Storage Facility, and Forestry Academy Fukushima.

Recovery of the Environment

Grid of environmental recovery projects including Interim Storage Facility, Environmental Radiation Monitoring Centre, and Centre for Environmental Creation.

Trend of Expenditure for Earthquake and Nuclear Disaster Response Projects (Prefectural)



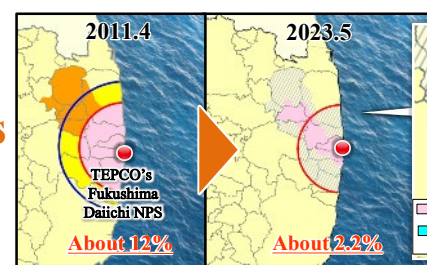
Towards the Realisation of a "New Fukushima" - Tracing the Path of Recovery (2/2)

Steady Reconstruction and Revitalization of Evacuation Zones

Development Status of Living Environment in 15 Municipalities (Residential rate as of Feb 2024)

Medical ... ● Education... ● Welfare... ● Commerce ... ● Other... ●

25 Mar. 2024



Evacuation-Designated Zones, which accounted for approximately 12% of the total prefectural land immediately after the disaster, have been reduced to about 2.2%.

Specified Reconstruction and Revitalization Base Areas and Specified Living Areas for Returnees have been established within the Difficult-to-return Zone for further development of the living environment.

Shinchi Town

- Sep. 2016 ● Completion of Shinchi Town Fire and Disaster Prevention Centre
- Dec. 2016 ● Resumption of services on the JR Joban Line between Soma and Hamayoshida
- Nov. 2018 ● Completion of Shinchi Energy Centre
- Apr. 2019 ● Reopening of Shinchi Marine Fishing Park
- Apr. 2019 ● Completion of commercial complex
- Jul. 2019 ● Reopening of Tsurushihama Swimming Beach
- Oct. 2019 ● Unveiling of Great East Japan Earthquake Cenotaph
- Dec. 2019 ● Opening of Tsurushi Disaster Prevention Green Space Park [Photo]
- Aug. 2020 ● Opening of Shinchi Cultural Exchange Centre
- Dec. 2020 ● Reopening of Shinchi Regional Wholesale Market (Tsurushi Fishing Port)



Soma City

- Apr. 2015 ● Opening of the Soma City Memorial Hall for Commemoration and Remembrance
- Apr. 2017 ● Matsukawaura Bridge placed in service, resumption of illumination
- Feb. 2018 ● Resumption of nori seaweed harvest and shipment (first time since the disaster) [Photo]
- Mar. 2018 ● Commencement of operations at Soma LNG Terminal and other facilities
- Oct. 2020 ● Grand opening of Matsukawaura Seaside Station



Minamisoma City

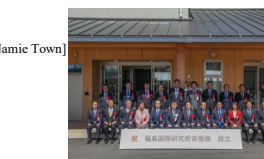
- Apr. 2014 ● Odaka Municipal Hospital resumes outpatient services three days a week
- Jul. 2016 ● [Evacuation order lifted, excluding the Difficult-to-return Zone]
- Apr. 2017 ● Reopening of Odaka Dispensary
- Apr. 2017 ● Opening of Odaka Industrial Technology and Commerce High School [Photo]
- Mar. 2018 ● Opening of Yagisawa Tunnel of Prefectural Road No. 12 Haramachi-Kawamata Line
- Apr. 2018 ● Resumption of "Umenoka", an intensive care home for the elderly
- Dec. 2018 ● Reopening of Yosshi-i Land, a long-term care health facility
- Dec. 2018 ● Opening of public-founded revitalization hub facility "Odaka Store"
- Jan. 2019 ● Opening of Odaka district revitalization hub facility "Odaka Exchange Center"
- Mar. 2020 ● Full-scale opening of Fukushima Robot Test Field
- Apr. 2020 ● Opening of Odaka Certified Childcare Centre
- Apr. 2021 ● Opening of Odaka Children's Playground "NIKO Park"
- Dec. 2021 ● Opening of Odaka Clinic
- Jul. 2023 ● Opening of Odaka Horticultural Park



(Odaka District, etc.) Residential rate 62.9%

Namie Town

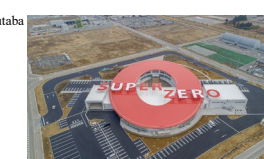
- Mar. 2017 ● [Evacuation order lifted excluding the Difficult-to-return Zone]
- Mar. 2017 ● Opening of Namie Clinic within the town
- Apr. 2017 ● Reopening of Namie Station on JR Joban Line
- Dec. 2017 ● [Certification of the Plans for the Specified Reconstruction and Revitalization Base Areas of Namie Town]
- Apr. 2018 ● Opening of elementary, junior high schools and certified childcare centres
- Mar. 2020 ● Opening of Fukushima Hydrogen Energy Research Field
- Mar. 2021 ● Grand opening of Michi-no-Eki (Roadside Station) "Namie"
- Aug. 2021 ● Grand opening of public accommodation facility "Ikoi no Mura Namie"
- Oct. 2021 ● Opening of Disaster Remains: Namie Municipal Ukedo Elementary School
- Jun. 2022 ● Opening of complex facility "Fureai Center Namie"
- Mar. 2023 ● [Evacuation order lifted in the Specified Reconstruction and Revitalization Base Areas]
- Apr. 2023 ● Opening of Fukushima Institute for Research, Education and Innovation (F-REI) [Photo]
- Oct. 2023 ● Opening of Namie Dispensary
- Jan. 2024 ● [Certification of the Plans for the Reconstruction and Revitalization of Specified Living Areas for Returnees of Namie Town]



Residential rate 14.5%

Futaba Town

- Sep. 2017 ● [Certification of the Plans for the Specified Reconstruction and Revitalization Base Areas of Futaba]
- Sep. 2019 ● Experimental cultivation of spinach and other vegetables began in Morotake District
- Sep. 2019 ● [Evacuation order lifted, excluding the Difficult-to-return Zone]
- Mar. 2020 ● Reopening of Futaba Station on JR Joban Line
- Sep. 2020 ● Opening of the Great East Japan Earthquake and Nuclear Disaster Memorial Museum
- Oct. 2020 ● Opening of Futaba Business Incubation and Community Center
- Aug. 2022 ● [Evacuation order lifted in the Specified Reconstruction and Revitalization Base Areas]
- Feb. 2023 ● Opening of Futaba Town clinic
- Apr. 2023 ● Grand Opening of "Futaba Super Zero Mill" [Photo]
- Sep. 2023 ● [Certification of the Plans for Reconstruction and Revitalization of Specified Living Areas for Returnees of Futaba Town]



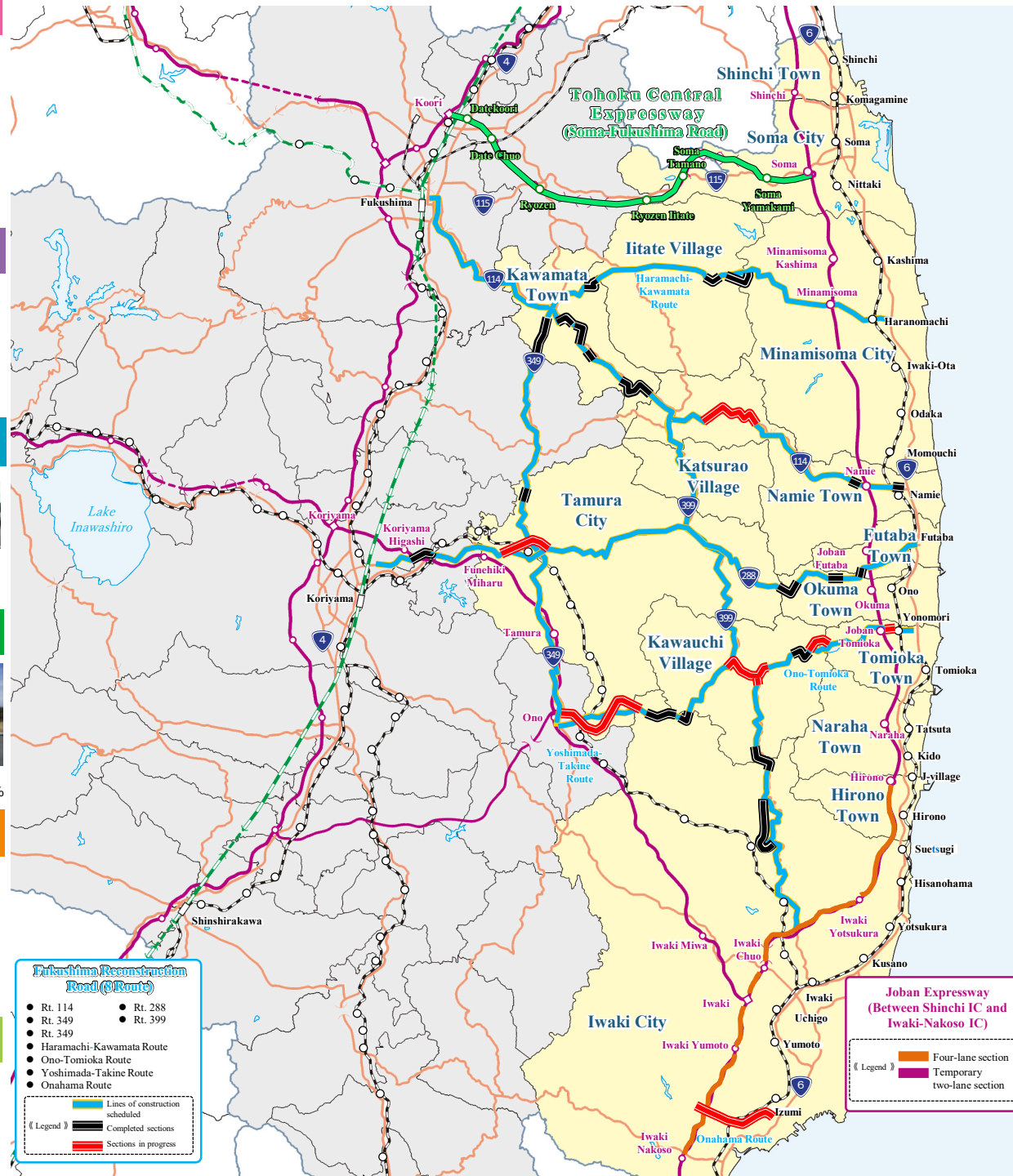
Residential rate 1.9%

Okuma Town

- Nov. 2017 ● [Certification of the Plans for the Specified Reconstruction and Revitalization Base Areas of Okuma Town]
- Apr. 2019 ● [Evacuation orders lifted excluding the Difficult-to-return Zone]
- Apr. 2019 ● Completion of New Town Hall in Ogawara District [Photo]
- Aug. 2019 ● First shipment from Nexus Farm Okuma strawberry farm
- Mar. 2020 ● Reopening of Ono Station on JR Joban Line
- Apr. 2020 ● Opening of group home for the elderly "Okuma Mominoki-en"
- Feb. 2021 ● Opening of Okuma Town clinic
- Apr. 2021 ● Opening of commercial facility "Okumart"
- Oct. 2021 ● Opening of accommodation facility with hot spring "Hot Okuma" and a community facility "Linkru Okuma"
- Apr. 2022 ● Opening of an integrated elementary and junior high school for compulsory education in Aizuwakamatsu City
- Jun. 2022 ● [Evacuation order lifted in the Specified Reconstruction and Revitalization Base Areas]
- Jul. 2022 ● Opening of Okuma Incubation Center for start-ups
- Jul. 2022 ● Opening of National Road Route 288 Nogamikotsuka construction section
- Apr. 2023 ● Okuma Municipal Manabiya Yumenomori moved to within the town, and later into a new school building in August at the same year
- Sep. 2023 ● [Certification of the Plans for Reconstruction and Revitalization of Specified Living Areas for Returnees of Okuma Town]
- (Certification of Changes, Feb. 2024)



Residential rate 6.5%



Naraha Town

- Jun. 2014 ● Reopening of Tatsuta Station on JR Joban Line
- Sep. 2015 ● [Evacuation order completely lifted]
- Feb. 2016 ● Establishment of Futaba Medical Center-affiliated Futaba Revitalization Clinic
- Mar. 2016 ● Reopening of "Lily Garden", an intensive care home for the elderly
- Apr. 2017 ● Reopening of elementary, junior high schools and certified childcare centres within the town
- Jun. 2018 ● Grand opening of "Kokonara Shopping Mall" and "Naraha CANvas" [Photo]
- Jul. 2018 ● Partial reopening of J-Village
- Apr. 2019 ● Opening of an indoor sports facility, "Naraha Sky Arena"
- Apr. 2019 ● Grand opening of J-Village
- Apr. 2019 ● Reopening of a hot spring and health facility at Michi-no-Eki (Roadside Station) "Naraha"
- Jun. 2020 ● Reopening of Michi-no-Eki Naraha Product Promotion Centre
- Jun. 2020 ● Reopening of Naraha Pharmacy
- Jun. 2022 ● Opening of "CODOU", a support centre for relocation and living



Residential rate 67.5%

Tomioka Town

- Mar. 2017 ● Grand Opening of "Sakura Mall Tomioka"
- Apr. 2017 ● [Evacuation orders lifted, excluding the Difficult-to-return Zone]
- Oct. 2017 ● Reopening of Tomioka Station on JR Joban Line
- Mar. 2018 ● [Certification of the Plans for the Specified Reconstruction and Revitalization Base Areas of Tomioka Town]
- Apr. 2018 ● Opening of Futaba Medical Center-affiliated Hospital [Photo]
- Apr. 2018 ● Reopening of elementary and junior high schools within the town
- Mar. 2020 ● Reopening of Yonomori Station on JR Joban Line
- Jul. 2021 ● Opening of Fukushima 12 Municipalities Relocation Support Center
- Jan. 2022 ● [Easing entry restrictions in the Specified Reconstruction and Revitalization Base Areas]
- Apr. 2022 ● Opening of Co-living Support Centre "Sakura no Sato"
- Apr. 2022 ● [Commencement of preparatory accommodations for the lifting of evacuation orders]
- Apr. 2023 ● [Evacuation order lifted in the Specified Reconstruction and Revitalization Base Areas]
- Jun. 2023 ● Opening of "Hamafuku Tomioka", a home care facility that provides regular and on-demand home visits
- Sep. 2023 ● Opening of "Tomioka WorkingBase" satellite office
- Nov. 2023 ● [Lifting of evacuation order for cemeteries and meeting places (specific sites) as well as access routes (specific routes)] in the Difficult-to-return Zone
- Feb. 2024 ● [Certification of the Plans for Reconstruction and Revitalization of Specified Living Areas for Returnees of Tomioka Town]



Residential rate 20.4%

Iitate Village

- Aug. 2016 ● Opening of Fureai-kan community centre
- Sep. 2016 ● Resumption of medical services at Iitate Clinic
- Mar. 2017 ● [Evacuation order lifted except for the Difficult-to-return Zone]
- Aug. 2017 ● Opening of the Iitate Village Michi-no-Eki (Roadside Station) "Madeikan" [Photo]
- Apr. 2018 ● [Certification of the Plans for the Specified Reconstruction and Revitalization Base Areas of Iitate Village]
- Apr. 2018 ● Reopening of elementary, junior high school and certified childcare centre within the village
- Sep. 2018 ● Resumption of community bus service
- Apr. 2020 ● Opening of a 9-year compulsory education school "Iitate Kibo-no-Sato Gakuen"
- May 2023 ● [Evacuation order lifted for the Specified Reconstruction and Revitalization Base Areas & Nagadoro Magata Park]



Residential rate 33.0%

Kawamata Town

- Jul. 2015 ● Commencement of Yamakiya District Revitalization Mega Solar Power Generation Project
- Oct. 2016 ● Resumption of medical service at Yamakiya Clinic
- Mar. 2017 ● [Evacuation order completely lifted]
- Jul. 2017 ● Opening of a reconstruction hub and commercial facility "Tonya no Sato" [Photo]
- Apr. 2018 ● Reopening of elementary and junior high schools in the Yamakiya district
- Mar. 2023 ● Completion of National Road Route 114 Yamakiya section and National Road Route 349 Otsunagi section



(Yamakiya District) Residential rate 51.2%

Katsurao Village

- Jun. 2016 ● [Evacuation order lifted excluding areas with the Difficult-to-return Zone]
- Nov. 2017 ● Resumption of medical services at Katsurao Village Clinic
- Apr. 2017 ● Reopening of Maruichi Store
- Jul. 2017 ● Reopening of Ishii Shokudo restaurant, Yamazaki Y Shop Yamasa [Photo]
- Apr. 2018 ● Resumption of kindergartens, elementary and junior high schools within the village
- May 2018 ● [Certification of the Plans for the Specified Reconstruction and Revitalization Base Areas of Katsurao Village]
- Jun. 2018 ● Opening of Katsurao village community revitalization centre "Azalea"
- Jun. 2022 ● [Evacuation order lifted in the Specified Reconstruction and Revitalization Base Areas]



Residential rate 36.9%

Tamura City

- Jul. 2011 ● Resumption of medical service at Miyakoji Clinic and Dental Clinic
- Mar. 2012 ● Reopening of Miyakoji Madoka-So, an intensive care home for the elderly
- Apr. 2014 ● [Evacuation order completely lifted]
- Apr. 2014 ● Reopening of elementary and junior high schools within Miyakoji Machi
- Apr. 2014 ● Opening of a publicly-funded commercial facility "Domo"
- Mar. 2016 ● Opening of confectionery "Miyakoji Sweets Yui" [Photo]
- Apr. 2017 ● Opening of Miyakoji Elementary School
- Jul. 2019 ● Opening of Tamura Municipal Hospital
- Apr. 2023 ● Opening of Ohisama Dome



(Miyakoji District) Residential rate 86.4%

Kawauchi Village

- Apr. 2012 ● Reopening of the municipal health, welfare and medical facility "Yufune"
- Apr. 2012 ● Reopening of elementary and junior high schools, nurseries within the village
- Oct. 2014 ● [Evacuation order lifted for the Preparation Area for Lift of Evacuation Orders]
- Nov. 2015 ● Opening of "Kawauchi", an intensive care home for the elderly
- Mar. 2016 ● Opening of commercial facility "Shopping Centre YO-TASHI"
- Apr. 2016 ● Opening of "Moritaro Pool" [Photo]
- Jun. 2016 ● [Evacuation order completely lifted]
- Apr. 2021 ● Opening of an integrated elementary and junior high school
- Apr. 2021 ● Opening of a certified daycare centre



Residential rate 83.0%

Hirono Town

- Aug. 2011 ● Reopening of Baba Clinic
- Jan. 2012 ● Reopening of Hirono Pharmacy
- Mar. 2012 ● [Return of Town Hall, lifting of mayor's evacuation order] (Emergency Evacuation Preparation Zone (national designation) lifted on 30 Sep. 2011)
- Apr. 2012 ● Reopening of "Hanabusen", an intensive care home for the elderly
- Aug. 2012 ● Reopening of elementary and junior high schools within the town
- Apr. 2015 ● Opening of Futaba Future High School
- Mar. 2016 ● Grand opening of a commercial facility, "Hirono Terrasse" [Photo]
- Apr. 2019 ● Opening of Futaba Future Junior High School
- Apr. 2019 ● Opening of a certified childcare centre
- Apr. 2019 ● Grand opening of J-Village



Residential rate 90.7%

Iwaki City

- Apr. 2017 ● Opening of Iwaki Green Base
- Jul. 2017 ● Opening of Iwaki FC Park
- Jun. 2018 ● Grand opening of "AEON Mall Iwaki Onahama"
- Dec. 2018 ● Establishment of Iwaki Medical Centre
- Sep. 2019 ● Training camp for Samoa national team for Rugby World Cup
- May 2020 ● Opening of Iwaki 3.11 Memorial and Revitalization Museum [Photo]
- Apr. 2022 ● Operation of the largest domestic wood biomass power generation
- Sep. 2022 ● Opening of National Road Route 399 Jumonji construction section
- Nov. 2022 ● Iwaki FC won J3 championship and promoted to J2
- Apr. 2023 ● Establishment of Iwaki Office of Fukushima Institute of Research, Education and Innovation (F-REI)



Residential rate 67.5%