

We have compiled visual representations to illustrate the efforts toward the revitalization of Fukushima.

# Towards the Realisation of a "New Fukushima"- Tracing the Path of Recovery - (1/2)

New Fukushima Revitalization

Promotion Headquarters

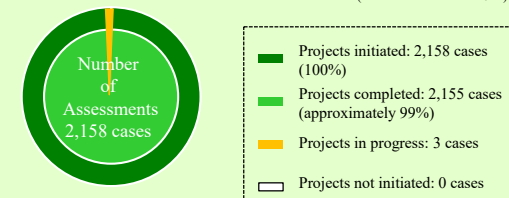
Fukushima Prefectural Government  
(TEL) 024-521-7109

★ ... Related to the Fukushima Innovation Coast Framework

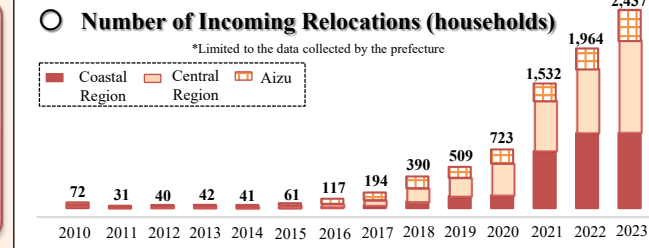
22 Jul. 2024

## [Living] Realisation of a Local Community where People can Live Safely and Securely

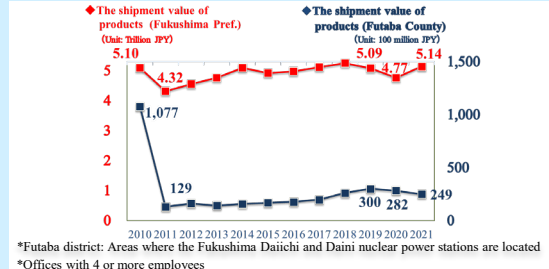
### ○ The Great East Japan Earthquake and Disaster Recovery Projects (As of the end of Jun. 2024)



## [People] Fostering Human Resources Leading the Future and Building Community Ties



## [Employment] Creating Sustainable and Attractive Jobs



## Public Infrastructure

<b>Joban Expressway</b> Mar. 2015 (Entire line in service) Iwaki Chuo IC to Hirano IC. Completion of expansion to 4-lane (13 Jun. 2021)	<b>Joban Line</b> Mar. 2020 (Full scale resumption of service) Source: East Japan Railway Company, Mito Branch	<b>Tohoku Chuo Expressway (Soma-Fukushima Road)</b> Apr. 2021 (Entire section was opened) Opening ceremony between Ryuzen IC and Date-Koori IC (24 Apr. 2021)	<b>Completion of the Restoration of 10 Fishing Ports in the Prefecture</b> ● Shinci Town: Tsurushihama Fishing Port ● Soma City: Matsukawaura Fishing Port ● Minamisoma City: Manogawa Fishing Port ● Namie Town: Ukedo Fishing Port ● Tomioka Town: Tomioka Fishing Port ● Iwaki City: Hisanohama, Toyoma, Nakoso, Yotsukura, Obama Fishing Ports  *Reference: Ukedo Fishing Port (Completion ceremony on 20 Nov. 2021)
<b>Onahama Port</b> Jun. 2022 (Commencement of full scale operation) International bulk terminal	<b>Tadami Line</b> Oct. 2022 (Full scale resumption of service) Resumption of service: Aizu Sawaguchi Station-Tadami Station	<b>Fukushima Reconstruction Roads</b> 2020s (Scheduled completion) Opening ceremony of National Road Route 289 (Nogamihutsuka section, Okuma Town)	

## Education and Fostering Human Resources

<b>④ Futaba Future School (Senior &amp; Junior High School)</b> Apr. 2015 (High school opening) Hirono Town 1st integrated junior high and high school opened in Apr. 2019	<b>⑤ Odaka Industrial Technology and Commerce High School</b> Apr. 2017 (Opened) Minamisoma City Odaka Commercial High School and Odaka Industrial High School merged to form a new school	<b>Faculty of Food and Agricultural Sciences at Fukushima University</b> Apr. 2019 (Establishment) Fukushima City	<b>School of Health Sciences at Fukushima Medical University</b> Apr. 2021 (Establishment) Fukushima City Training for medical radiologists, clinical laboratory technicians, physical therapists and occupational therapists
--	--	--	---

## R&D, Development of human resources for industry

<b>Fukushima Institute for Research, Education and Innovation (F-REI)</b> Apr. 2023 (Headquarters opened)	<b>F-REI Science Lab</b> Apr. 2023 (Opened)	<b>Fukushima Innovation Future Lectures</b> Apr. 2023 (Opened)	<b>Visiting lecture (Taira Technical High School)</b> Apr. 2023 (Opened)
---	---	--	--

## Commercial Facilities

<b>Shopping Centre "YO-TASHI"</b> Mar. 2016 (Opened) Kawauchi Village	<b>Tomioka Town Commercial Complex, "Sakura Mall Tomioka"</b> Nov. 2016 (Opened) Tomioka Town	<b>Yamakita District's Reconstruction Hub and Commercial Facility "Tonya no Sato"</b> Jul. 2017 (Opened) Kawamata Town	<b>Michi-no-Eki (Roadside Station) of Iitate Village "Madeikan"</b> Aug. 2017 (Opened) Iitate Village
<b>Kokonara Shopping Mall</b> Jun. 2018 (Opened) Naraha Town	<b>Odaka Store</b> Dec. 2018 (Opened) Minamisoma City	<b>Michi-no-Eki (Roadside Station) "Namic"</b> Mar. 2021 (Grand opening) Namie Town	<b>Commercial Facility "Okumart"</b> Apr. 2021 (Opened) Okuma Town

## Creation of Relocation, Settlement and Increasing the Number of People Visiting the Prefecture

<b>Manabiya Yumenomori</b> Aug. 2023 (Opened) Okuma Town	<b>Katsurao Village Community Revitalization Centre "Azalea"</b> Jun. 2018 (Opened) Katsurao Village	<b>⑥ J-Village</b> Apr. 2019 (Fully reopened) Naraha Town Hirono Town	<b>ICT Office "Smart City AiCT"</b> Apr. 2019 (Opened) Aizuwakamatsu City
<b>⑦ The Great East Japan Earthquake and Nuclear Disaster Memorial Museum</b> Sep. 2020 (Opened) Futaba Town	<b>Futaba Business Incubation and Community Center</b> Oct. 2020 (Opened) Futaba Town	<b>The Historical Archive Museum of Tomioka</b> Jul. 2017 (Opened) Tomioka Town	<b>Fukushima 12 Municipalities Relocation Support Center</b> Jul. 2017 (Opened) Tomioka Town
<b>Tomioka Working Base</b> Sep. 2023 (Opened) Tomioka Town	<b>Preserved Disaster Remains: Namie Municipal Ukedo Elementary School</b> Oct. 2021 (Opened) Namie Town	<b>Okuma Incubation Center</b> Jul. 2022 (Opened) Okuma Town	<b>Touge no Mori Obori (pottery centre)</b> Jun. 2023 (Reopened) Namie Town

## Decommissioning

<b>Creative Decommissioning Robot Competition (Hairo Sozo Robocon)</b> 2016 Scenes from the 6th Competition (2021)	<b>Naraha Center for Remote Control Technology Development</b> Apr. 2016 (Commencement of full-scale operation) Naraha Town	<b>Collaborative Laboratories for Advanced Decommissioning Science (CLADS)</b> Apr. 2017 (Commencement of operation) Tomioka Town	<b>Okuma Analysis and Research Center</b> Mar. 2018 (Commencement of partial operation) Okuma Town
--	--	--	---

## Healthcare-related Facilities

<b>① Futaba Town Clinic</b> Feb. 2023 (Opened) Naraha Town	<b>② Futaba Medical Center-affiliated Hospital</b> Apr. 2018 (Commencement of medical services) Tomioka Town
---	---

## Educational Facilities

### Resumption of Local Schools

[Resumption dates]

- Odaka District, Minamisoma City: Kindergartens, elementary and junior high schools [Apr. 2017]
- Naraha Town: Childcare centres, elementary and junior high schools [Apr. 2017]
- Yamakita District, Kawamata Town: Elementary and junior high schools [Apr. 2018]
- Tomioka Town: Elementary and junior high schools [Apr. 2018]
- Childcare centres [Apr. 2018]
- Namie Town: Childcare centres, elementary and junior high schools [Apr. 2018]
- Katsurao Village: Kindergartens, elementary and junior high schools [Apr. 2018]
- Iitate Village: Childcare centres [Apr. 2018]
- Schools for compulsory education [Apr. 2020]
- Hirono Town: Childcare centres, elementary and junior high schools [Apr. 2019]
- Kawauchi Village: Elementary and junior high schools [Apr. 2012]
- Miyakoji District, Tamura City: Elementary and junior high schools [Apr. 2014]
- Okuma Town: Schools for compulsory education [Apr. 2023]

Reference: Okuma Municipal Manabiya Yumenomori

## Residential Facilities

### Constructing Revitalization Public Housing

- For those affected by the earthquake and tsunami: Completed 2,807 units in 11 municipalities
- For evacuees from the nuclear power accident: Completed a total of 4,767 units in 15 municipalities
- For returnees and others: Planned development of 829 units in 10 municipalities

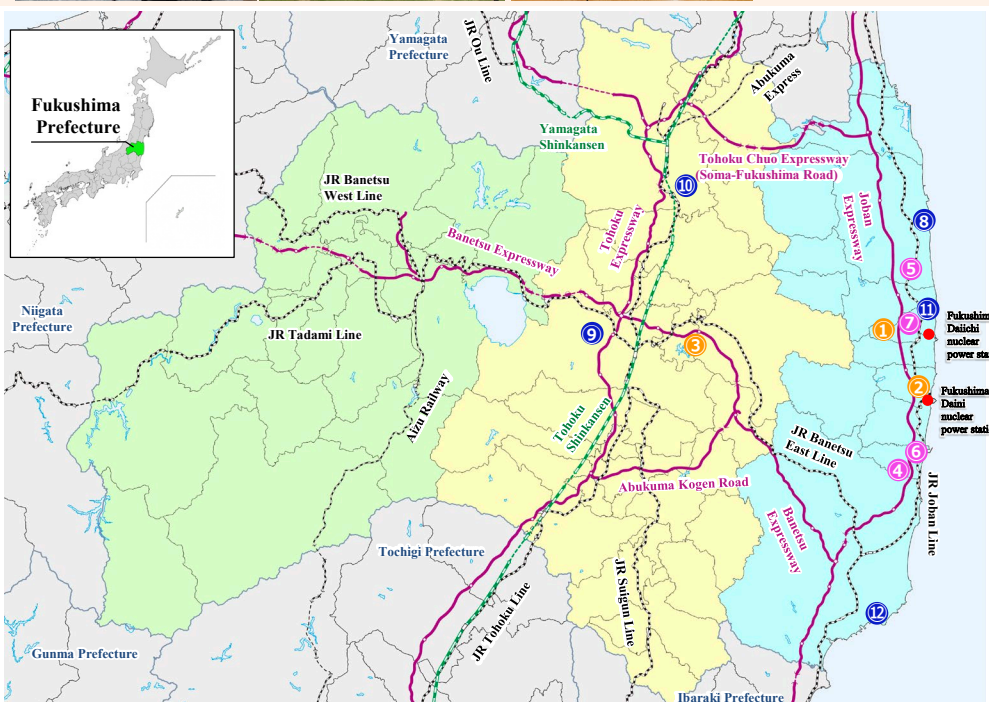
Reference: Iwasaki Housing Complex, Iwaki City

### Wide Area Bus Services

[Start date of service of each route]

- Iwaki-Tomioka Line [1 Apr. 2017]
- Katsurao-Funehiki Line [1 Apr. 2017]
- Kawauchi-Funehiki Line [1 Apr. 2017]
- Kawauchi-Ono Line [2 Oct. 2017]
- Minamisoma, Kawamata-Fukushima via Fukushima Medical University Line [1 Oct. 2017]
- Kawauchi-Tomioka Line [2 Apr. 2018]
- Tomioka-Namie FH2R Line [1 Apr. 2021]
- Futaba-Minamisoma Line [1 Oct. 2023]

Source: Shin-Jubaru Kōsen Co., Ltd.



## Robotics, Drones, Aerospace

<b>University of Aizu Revitalization Center</b> Oct. 2015 (Commencement of operation) Aizuwakamatsu City	<b>⑧ Fukushima Robot Test Field</b> Mar. 2020 (Fully opened) Minamisoma City Namie Town
---	---

## Healthcare-related industries

<b>⑨ Fukushima Medical Device Development Support Centre</b> Nov. 2016 (Commencement of operation) Koriyama City	<b>⑩ Fukushima Global Medical Science Center</b> Dec. 2016 (Commencement of full operation) Fukushima City
---	---

## Energy, Environment, Recycling

<b>Fukushima Renewable Energy Institute, AIST (FREIA)</b> Apr. 2014 (Commencement of operation) Koriyama City	<b>Soma IHI Green Energy Center</b> Apr. 2018 (Opening) Soma City	<b>⑪ Fukushima Hydrogen Energy Research Field</b> Mar. 2020 (Opening) Namie Town	<b>Soso Smart Eco-Company</b> Oct. 2020 (Operation commenced) Okuma Town
--	--	---	---

## Agricultural, Forestry, and Fisheries Industries

<b>⑫ Fisheries and Marine Science Research Centre</b> Jul. 2019 (Commencement of operation) Iwaki City	<b>Sweet Potato Storage Facility</b> Sep. 2021 (Opened) Tamura City	<b>Forestry Academy Fukushima</b> Apr. 2022 (Opened) Koriyama City	<b>Fukushima Advanced Manufacturing Center For Laminated Timber (FLAM)</b> Jun. 2022 (Commencement of operation) Namie Town
<b>Fukushima Agricultural Management and Agricultural Support Centre</b> Apr. 2023 (opened) Fukushima City	<b>Packed Cooked Rice Factory</b> Nov. 2023 (Commencement of operation) Naraha Town	<b>Kawamata Polyester Soil Cultivation Promotion Association</b> Anthurium Kawamata Town	<b>Nexus Farm Okuma Corp.</b> Okuma Town

## Recovery of the Environment

<b>Interim Storage Facility</b> Mar. 2015 (Start of transfer) Okuma Town Futaba Town	<b>Environmental Radiation Monitoring Centre</b> Nov. 2015 (Operation commenced) Minamisoma City	<b>⑬ Centre for Environmental Creation</b> July. 2016 (Commenced full operation) Miharu Town	<b>Decontamination</b> Dec. 2023 (Commencement of decontamination in the Specified Living Areas for Agriculture) Okuma Town
--	---	---	--

## Tourism industry

<b>Hamadori blue tourism</b> Hamadori	<b>Adventure tourism</b> Naraha	<b>Fermentation tourism</b> Okuma	<b>Green tourism</b> Okuma
--	------------------------------------	--------------------------------------	-------------------------------

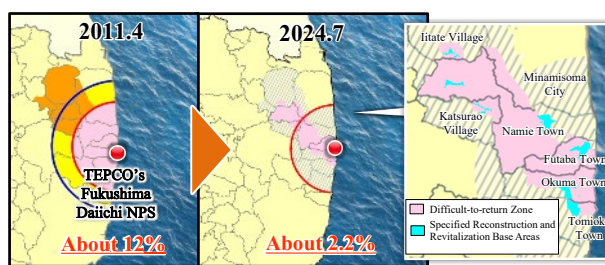
# Towards the Realisation of a "New Fukushima" - Tracing the Path of Recovery (2/2)

## Steady Reconstruction and Revitalization of Evacuation Zones

### Development Status of Living Environment in 15 Municipalities (Residential rate as of May 2024)

22 Jul. 2024

Medical ... ● Education... ● Welfare... ● Commerce ... ● Other... ●



Evacuation-Designated Zones, which accounted for approximately 12% of the total prefectural land immediately after the disaster, have been reduced to about 2.2%.

Specified Reconstruction and Revitalization Base Areas and Specified Living Areas for Returnees have been established within the Difficult-to-return Zone for further development of the living environment.

## Shinchi Town

- Sep. 2016 ● Completion of Shinchi Town Fire and Disaster Prevention Centre
- Dec. 2016 ● Resumption of services on the JR Joban Line between Soma and Hamayoshida
- Nov. 2018 ● Completion of Shinchi Energy Centre
- Apr. 2019 ● Reopening of Shinchi Marine Fishing Park
- Apr. 2019 ● Completion of commercial complex
- Jul. 2019 ● Reopening of Tsurushihama Swimming Beach
- Oct. 2019 ● Unveiling of Great East Japan Earthquake Cenotaph
- Dec. 2019 ● Opening of Tsurushi Disaster Prevention Green Space Park [Photo]
- Aug. 2020 ● Opening of Shinchi Cultural Exchange Centre
- Dec. 2020 ● Reopening of Shinchi Regional Wholesale Market (Tsurushi Fishing Port)



## Soma City

- Apr. 2015 ● The Soma City Heritage and Memorial Hall opened
- Apr. 2017 ● Matsukawaura Bridge placed in service, resumption of illumination
- Feb. 2018 ● Resumption of nori seaweed harvest and shipment (first time since the disaster)
- Mar. 2018 ● Commencement of operations at Soma LNG Terminal and other facilities
- Oct. 2020 ● Grand opening of Matsukawaura Seaside Station [Photo]



## Minamisoma City

- Apr. 2014 ● Odaka Municipal Hospital resumes outpatient services three days a week
- Jul. 2016 ● [Evacuation order lifted, excluding the Difficult-to-return Zone]
- Apr. 2017 ● Reopening of Odaka Dispensary
- Apr. 2017 ● Opening of Odaka Industrial Technology and Commerce High School
- Mar. 2018 ● Opening of Yagisawa Tunnel of Prefectural Road No. 12 Haramachi—Kawamata Line
- Apr. 2018 ● Resumption of "Umenoka", an intensive care home for the elderly
- Dec. 2018 ● Reopening of Yosshi-i Land, a long-term care health facility
- Dec. 2018 ● Opening of public-founded commercial facility "Odaka Store"
- Jan. 2019 ● Opening of Odaka district revitalization hub facility "Odaka Exchange Center"
- Mar. 2020 ● Full-scale opening of Fukushima Robot Test Field
- Apr. 2020 ● Opening of Odaka Certified Childcare Centre
- Apr. 2021 ● Opening of Odaka Children's Playground "NIKO Park"
- Dec. 2021 ● Opening of Odaka Clinic
- Jul. 2023 ● Opening of Odaka Horticultural Park
- Apr. 2024 ● TSUMUGI Future Agriculture Exchange Space opened
- Apr. 2020 ● Mirai Agriculture School opened [Photo]



(Odaka District, etc.) Residential rate 63.6%

## Namie Town

- Mar. 2017 ● [Evacuation order lifted excluding the Difficult-to-return Zone]
- Mar. 2017 ● Opening of Namie Clinic within the town
- Apr. 2017 ● Reopening of Namie Station on JR Joban Line
- Dec. 2017 ● [Certification of the Plans for the Specified Reconstruction and Revitalization Base Areas of Namie Town]
- Apr. 2018 ● Opening of elementary, junior high schools and certified childcare centres
- Mar. 2020 ● Opening of Fukushima Hydrogen Energy Research Field
- Mar. 2021 ● Grand opening of Michi-no-Eki (Roadside Station) "Namie"
- Aug. 2021 ● Grand opening of public accommodation facility "Koi no Mura Namie"
- Oct. 2021 ● Opening of Disaster Remains: Namie Municipal Ukedo Elementary School
- Jun. 2022 ● Opening of complex facility "Fureai Center Namie"
- Mar. 2023 ● [Evacuation order lifted in the Specified Reconstruction and Revitalization Base Areas]
- Apr. 2023 ● Opening of Fukushima Institute for Research, Education and Innovation (F-REI) [Photo]
- Oct. 2023 ● Opening of Namie Dispensary
- Jan. 2024 ● [Certification of the Plans for the Reconstruction and Revitalization of Specified Living Areas for Returnees of Namie Town]
- Apr. 2024 ● Namie Town Disaster Prevention Exchange Center opened



Residential rate 14.9%

## Futaba Town

- Sep. 2017 ● [Certification of the Plans for the Specified Reconstruction and Revitalization Base Areas of Futaba Town]
- Sep. 2019 ● Experimental cultivation of spinach and other vegetables began in Morotake District
- Mar. 2020 ● [Evacuation order lifted, excluding the Difficult-to-return Zone]
- Mar. 2020 ● Reopening of Futaba Station on JR Joban Line
- Sep. 2020 ● Opening of The Great East Japan Earthquake and Nuclear Disaster Memorial Museum
- Oct. 2020 ● Opening of Futaba Business Incubation and Community Center
- Aug. 2022 ● [Evacuation order lifted in the Specified Reconstruction and Revitalization Base Areas]
- Feb. 2023 ● Opening of Futaba Town clinic
- Apr. 2023 ● Grand Opening of "Futaba Super Zero Mill"
- Sep. 2023 ● [Certification of the Plans for Reconstruction and Revitalization of Specified Living Areas for Returnees of Futaba Town]
- Mar. 2024 ● Futaba Post Office reopened
- Apr. 2024 ● MOU signed with AEON TOHOKU co., Ltd. for commercial facility development
- Jun. 2024 ● All 86 units of "Ekinishi" Public Housing Complex completed [Photo]



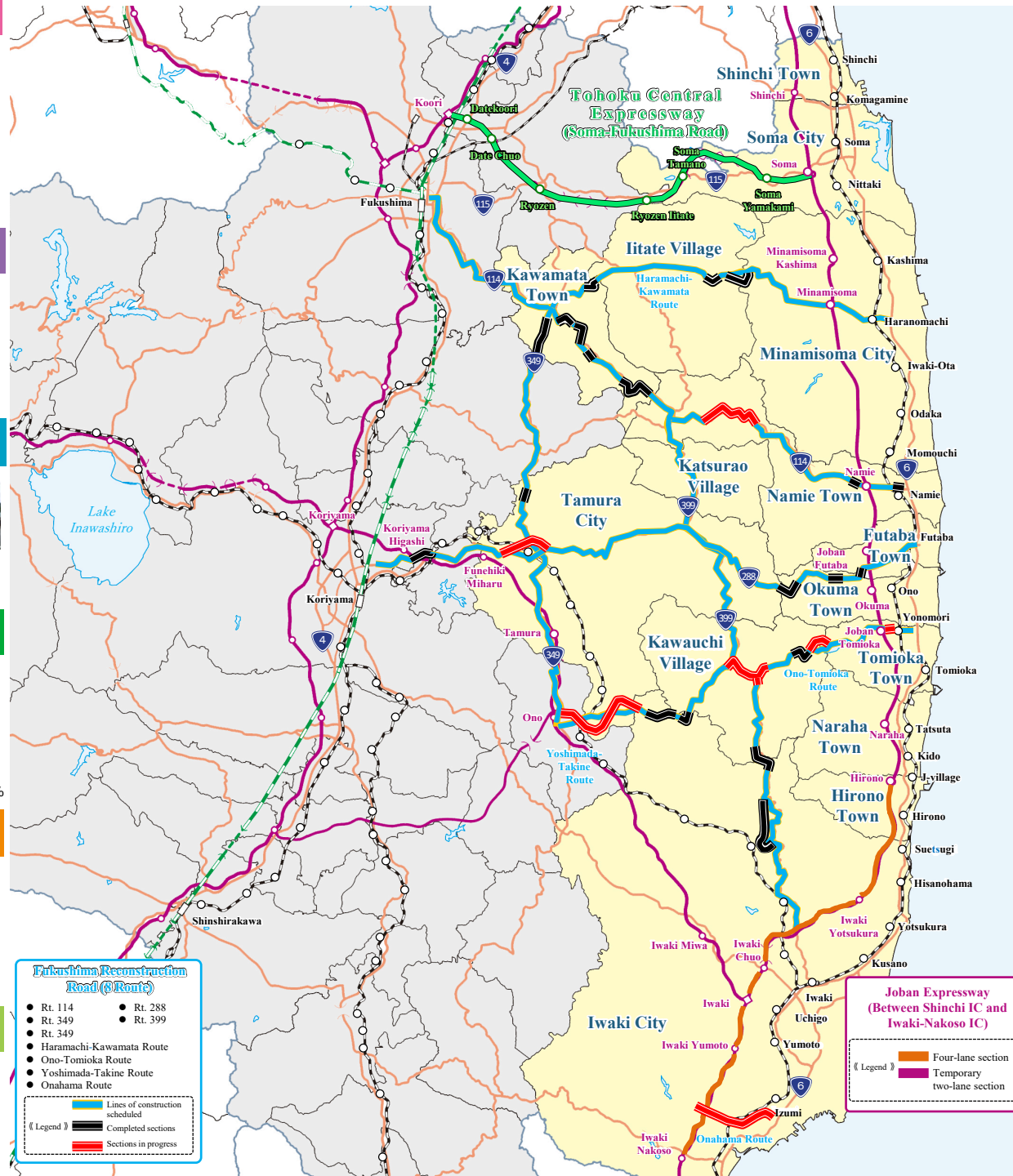
Residential rate 2.0%

## Okuma Town

- Nov. 2017 ● [Certification of the Plans for the Specified Reconstruction and Revitalization Base Areas of Okuma Town]
- Apr. 2019 ● [Evacuation orders lifted excluding the Difficult-to-return Zone]
- Apr. 2019 ● Completion of New Town Hall in Ogawara District [Photo]
- Aug. 2019 ● First shipment from Nexus Farm Okuma strawberry farm
- Mar. 2020 ● Reopening of Ono Station on JR Joban Line
- Apr. 2020 ● Opening of group home for the elderly "Okuma Mominoki-en"
- Feb. 2021 ● Opening of Okuma Town clinic
- Apr. 2021 ● Opening of commercial facility "Okumart"
- Oct. 2021 ● Opening of accommodation facility with hot spring "Hot Okuma" and a community facility "Linkru Okuma"
- Apr. 2022 ● Opening of an integrated elementary and junior high school for compulsory education in Aizuwakamatsu City
- Jun. 2022 ● [Evacuation order lifted in the Specified Reconstruction and Revitalization Base Areas]
- Jul. 2022 ● Opening of Okuma Incubation Center for start-ups
- Jul. 2022 ● Opening of National Road Route 288 Nogamikotsuka construction section
- Apr. 2023 ● Okuma Municipal Manabiya Yumenomori moved to within the town, and later into a new school building in August at the same year
- Sep. 2023 ● [Certification of the Plans for Reconstruction and Revitalization of Specified Living Areas for Returnees of Okuma Town] (Certification of Changes, Feb. 2024)



Residential rate 7.8%



## Iitate Village

- Aug. 2016 ● Opening of Fureai-kan community centre
- Sep. 2016 ● Resumption of medical services at Iitate Clinic
- Mar. 2017 ● [Evacuation order lifted except for the Difficult-to-return Zone]
- Aug. 2017 ● Opening of the Iitate Village Michi-no-Eki (Roadside Station) "Madeikan" [Photo]
- Apr. 2018 ● [Certification of the Plans for the Specified Reconstruction and Revitalization Base Areas of Iitate Village]
- Apr. 2018 ● Reopening of elementary, junior high school and certified childcare centre within the village
- Sep. 2018 ● Resumption of community bus service
- Apr. 2020 ● Opening of a 9-year compulsory education school "Iitate Kibo-no-Sato Gakuen"
- May 2023 ● [Evacuation order lifted for the Specified Reconstruction and Revitalization Base Areas & Nagadoro Magata Park]
- Jul. 2024 ● Kirari Agricultural Training Hall opened

Residential rate 33.0%



## Kawamata Town

- Jul. 2015 ● Commencement of Yamakiya District Revitalization Mega Solar Power Generation Project
- Oct. 2016 ● Resumption of medical service at Yamakiya Clinic
- Mar. 2017 ● [Evacuation order completely lifted]
- Jul. 2017 ● Opening of a reconstruction hub and commercial facility "Tonya no Sato" [Photo]
- Apr. 2018 ● Reopening of elementary and junior high schools in the Yamakiya district
- Mar. 2023 ● Completion of National Road Route 114 Yamakiya section and National Road Route 349 Otsunagi section

(Yamakiya District) Residential rate 52.4%



## Katsurao Village

- Jun. 2016 ● [Evacuation order lifted excluding areas with the Difficult-to-return Zone]
- Nov. 2017 ● Resumption of medical services at Katsurao Village Clinic
- Apr. 2017 ● Reopening of Maruchi Store
- Jul. 2017 ● Reopening of Ishii Shokudo restaurant, Yamazaki Y Shop Yamasa [Photo]
- Apr. 2018 ● Resumption of kindergartens, elementary and junior high schools within the village
- May 2018 ● [Certification of the Plans for the Specified Reconstruction and Revitalization Base Areas of Katsurao Village]
- Jun. 2018 ● Opening of Katsurao village community revitalization centre "Azalea"
- Jun. 2022 ● [Evacuation order lifted in the Specified Reconstruction and Revitalization Base Areas]

Residential rate 37.2%



## Tamura City

- Jul. 2011 ● Resumption of medical service at Miyakoji Clinic and Dental Clinic
- Mar. 2012 ● Reopening of Miyakoji Madoka-So, an intensive care home for the elderly
- Apr. 2014 ● [Evacuation order completely lifted]
- Apr. 2014 ● Reopening of elementary and junior high schools within Miyakoji Machi
- Apr. 2014 ● Opening of a publicly-funded commercial facility "Domo"
- Mar. 2016 ● Opening of confectionery "Miyakoji Sweets Yui"
- Apr. 2017 ● Opening of Miyakoji Elementary School
- Jul. 2019 ● Opening of Tamura Municipal Hospital
- Apr. 2023 ● Opening of Ohisama Dome
- Jun. 2024 ● Challenge House Miyakoji opened [Photo]

(Miyakoji District) Residential rate 86.6%



## Kawauchi Village

- Apr. 2012 ● Reopening of the municipal health, welfare and medical facility "Yufune"
- Apr. 2012 ● Reopening of elementary and junior high schools, nurseries within the village
- Oct. 2014 ● [Evacuation order lifted for the Preparation Area for Lift of Evacuation Orders]
- Nov. 2015 ● Opening of "Kawauchi", an intensive care home for the elderly
- Mar. 2016 ● Opening of commercial facility "Shopping Centre YO-TASHI"
- Apr. 2016 ● Opening of "Moritaro Pool" [Photo]
- Jun. 2016 ● [Evacuation order completely lifted]
- Apr. 2021 ● Opening of an integrated elementary and junior high school
- Apr. 2021 ● Opening of a certified daycare centre

Residential rate 83.1%



## Hirono Town

- Aug. 2011 ● Reopening of Baba Clinic
- Jan. 2012 ● Reopening of Hirono Pharmacy
- Mar. 2012 ● [Return of Town Hall, lifting of mayor's evacuation order] (Emergency Evacuation Preparation Zone (national designation) lifted on 30 Sep. 2011)
- Apr. 2012 ● Reopening of "Hanabusaen", an intensive care home for the elderly
- Aug. 2012 ● Reopening of elementary and junior high schools within the town
- Apr. 2015 ● Opening of Futaba Future High School
- Mar. 2016 ● Grand opening of a commercial facility, "Hirono Terrace"
- Apr. 2019 ● Opening of Futaba Future Junior High School
- Apr. 2019 ● Opening of a certified childcare centre
- Apr. 2019 ● Grand opening of J-Village
- Mar. 2022 ● Elevator installed on Bridge to the Future
- Mar. 2023 ● Developed Higashi-machi Industrial Park
- May 2023 ● Developed East side of Hirono Station (Hirono Station East New Town) [Photo]
- Sep. 2023 ● Elevator installed inside Hirono Station

Residential rate 91.3%



## Iwaki City

- Apr. 2017 ● Opening of Iwaki Green Base
- Jul. 2017 ● Opening of Iwaki FC Park
- Jun. 2018 ● Grand opening of "AEON Mall Iwaki Onahama"
- Dec. 2018 ● Establishment of Iwaki Medical Centre
- Sep. 2019 ● Training camp for Samoa national team for Rugby World Cup
- May 2020 ● Opening of Iwaki 3.11 Memorial and Revitalization Museum [Photo]
- Apr. 2022 ● Operation of the largest domestic wood biomass power generation
- Sep. 2022 ● Opening of National Road Route 399 Jomonji construction section
- Nov. 2022 ● Iwaki FC won J3 championship and promoted to J2
- Apr. 2023 ● Establishment of Iwaki Office of Fukushima Institute of Research, Education and Innovation (F-REI)



Residential rate 68.4%

## Naraha Town

- Jun. 2014 ● Reopening of Tatsuta Station on JR Joban Line
- Sep. 2015 ● [Evacuation order completely lifted]
- Feb. 2016 ● Establishment of Futaba Medical Center-affiliated Futaba Revitalization Clinic
- Mar. 2016 ● Reopening of "Lily Garden", an intensive care home for the elderly
- Apr. 2017 ● Reopening of elementary, junior high schools and certified childcare centres within the town
- Jun. 2018 ● Grand opening of "Kokonara Shopping Mall" and "Naraha CANvas"
- Jul. 2018 ● Partial reopening of J-Village
- Apr. 2019 ● Opening of an indoor sports facility, "Naraha Sky Arena"
- Apr. 2019 ● Grand opening of J-Village
- Apr. 2019 ● Reopening of a hot spring and health facility at Michi-no-Eki (Roadside Station) "Naraha"
- Jun. 2020 ● Reopening of Michi-no-Eki Naraha Product Promotion Centre
- Jun. 2020 ● Reopening of Naraha Pharmacy
- Jun. 2022 ● Opening of "CODOU", a support centre for relocation and living
- Apr. 2023 ● Community Activity Center "Mazarasse" opened [Photo]



## Tomioka Town

- Mar. 2017 ● Grand Opening of "Sakura Mall Tomioka"
- Apr. 2017 ● [Evacuation orders lifted, excluding the Difficult-to-return Zone]
- Oct. 2017 ● Reopening of Tomioka Station on JR Joban Line
- Mar. 2018 ● [Certification of the Plans for the Specified Reconstruction and Revitalization Base Areas of Tomioka Town]
- Apr. 2018 ● Opening of Futaba Medical Center-affiliated Hospital [Photo]
- Apr. 2018 ● Reopening of elementary and junior high schools within the town
- Mar. 2020 ● Reopening of Yonomori Station on JR Joban Line
- Jul. 2021 ● Opening of Fukushima 12 Municipalities Relocation Support Center
- Jan. 2022 ● [Eased entry restrictions in the Specified Reconstruction and Revitalization Base Areas]
- Apr. 2022 ● Opening of Co-living Support Centre "Sakura no Sato"
- Apr. 2022 ● [Commencement of preparatory accommodations for the lifting of evacuation orders]
- Apr. 2023 ● [Evacuation order lifted in the Specified Reconstruction and Revitalization Base Areas]
- Jun. 2023 ● Opening of "Hamafuku Tomioka", a home care facility that provides regular and on-demand home visits
- Sep. 2023 ● Opening of "TomiokaWorkingBase" satellite office
- Nov. 2023 ● [Lifting of evacuation order for cemeteries and meeting places (specific sites) as well as access routes (specific routes)] in the Difficult-to-return Zone
- Feb. 2024 ● [Certification of the Plans for Reconstruction and Revitalization of Specified Living Areas for Returnees of Tomioka Town]



Residential rate 21.4%